

PARTNERS FOR EVERY STAGE

2019 Annual Report

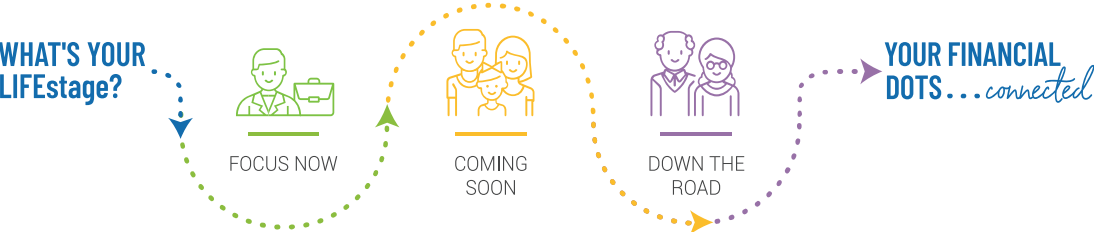



Prospera
CREDIT UNION

YOUR FINANCIAL DOTS...connected

In 2019 Prospera remained true to providing personal, tailored guidance to prosperity. But we're not stopping there! Prospera is focused on holistic financial health for every member. We love teaching our members how to focus on what's important to them now, anticipate what's coming soon, and plan what's down the road for a healthy financial future.

Page through the rest of the annual report for more on our personal guidance for all life's stages and to learn about our partners for every stage!



Credit Union Growth

The Credit Union continued to increase its capital and produce strong net income. Prospera welcomed nearly 2,400 new members to the credit union family and helped over 3,200 members save money on new loan payments by offering competitive rates on nearly \$52 million of loan volume. In addition, Prospera helped nearly 148 members fulfill their dream of homeownership or refinance.

Insured by NCUA

As always, we feel it is important to remind you that all credit union deposits are federally insured through the National Credit Union Administration (NCUA) up to at least \$250,000. Not one penny of federally insured credit union savings has ever been lost and your deposits here at Prospera are federally insured, backed by the full faith and credit of the U.S. government.

Personal Tailored Guidance to Prosperity

Prospera is committed to providing our members with a superior member experience. Therefore, we continue our internal focus on educating employees and arming them with the knowledge to provide you with personal, tailored guidance to prosperity.

2020

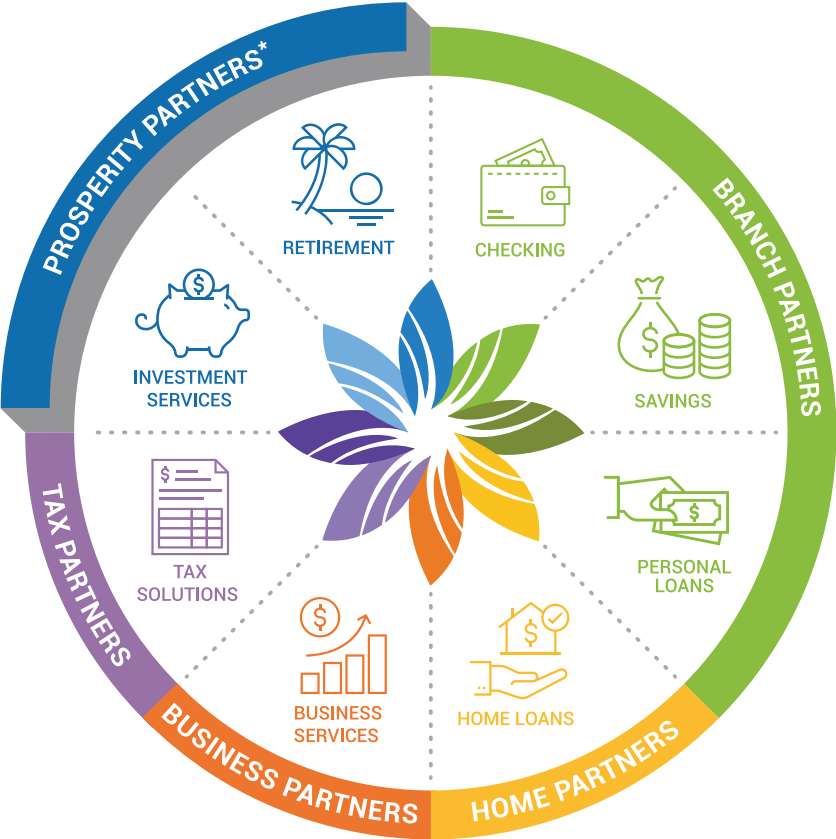
What a year 2020 has already been. The CEO of one of our vendors deemed 2020 as "the Year of the Asterisk" very early in the COVID-19 pandemic and how right he was. This has become somewhat of a theme for Prospera. Our focus has been taking care of our members during this challenging time while also keeping our valued employees safe. We are so proud of our staff – they have truly stepped up and stood out as financial first responders – taking care of our members even with limited touch points. We are also thankful for the patience and understanding of our members as we have navigated truly uncharted waters. For our valued members we have introduced Emergency Loans, deferments, skip-a-payments, virtual appointments and more. What the new normal will look like we don't know, but we do know we will get through this together.



Partners for every stage

Strong enough to provide everything you need. Small enough to know you personally. Experience personal, financial guidance across all life stages.

- Branch Partners
- Home Partners
- Business Partners
- Tax Partners
- Prosperity Partners



SHEILA SCHINKE
CEO

Sheila Schinke

HEATHER BOYER
Chairperson

Heather Boyer

Board of Directors

SCOTT BARR
Vice-Chairperson

MELISSA BUBLITZ
Secretary

THOMAS CLIFFORD
Treasurer

C. SCOTT COPELAND
Director

JILL UITENBROEK
Director

TIM McADAW
Director

LOUIS LICARI
Director

JILL RONK
Director

Personal guidance for all life's stages

Our financial professionals will provide guidance themselves, or access to the best, most appropriate partners with the goal of your unique version of prosperity in mind. We will utilize our customized roadmap tool to offer personal guidance through all your life stages and connect the dots of your financial journey.

Financial Summary

Balance Sheet	2018	2019
Cash and Equivalents	\$3,809,532	\$8,122,098
Net Loans	\$224,619,972	\$231,753,169
Investments	\$20,619,836	\$38,598,991
Fixed Assets	\$5,772,348	\$5,896,209
Other Assets	\$6,378,302	\$5,520,638
TOTAL ASSETS	\$261,199,990	\$289,891,105
Member Deposits	\$236,157,795	\$263,366,152
Other Liabilities	\$1,615,200	\$611,913
Total Reserves	\$23,426,995	\$25,913,040
TOTAL LIABILITIES & EQUITY	\$261,199,990	\$289,891,105

Income Statement	2018	2019
Interest Income	\$9,542,659	\$10,944,938
Other Income	\$3,421,768	\$3,833,569
TOTAL INCOME	\$12,964,427	\$14,778,507
Operating Expenses	\$9,220,165	\$10,045,240
Interest Expense (dividends)	\$1,426,174	\$2,247,222
Total Expenses	\$10,646,339	\$12,292,462
NET INCOME TO RESERVES	\$2,318,088	\$2,486,045

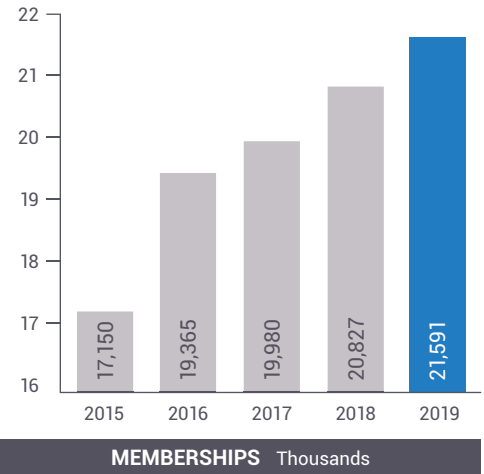
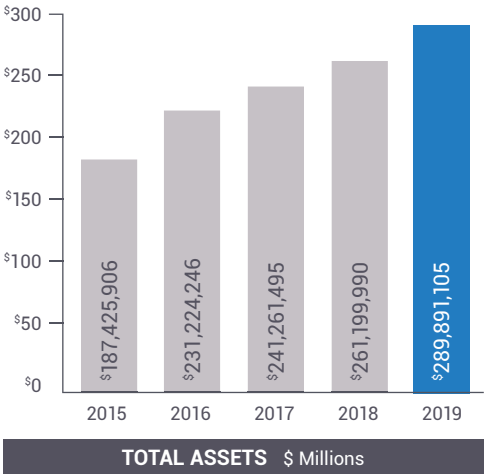
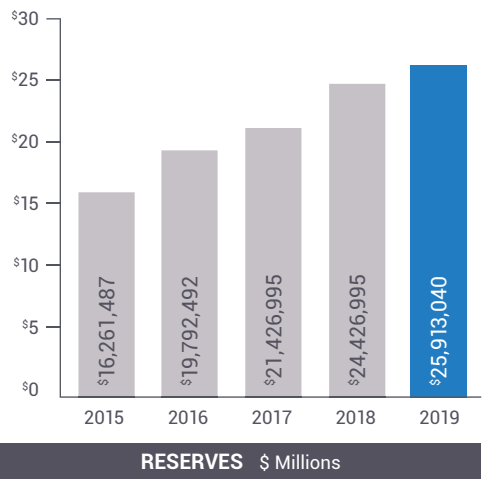
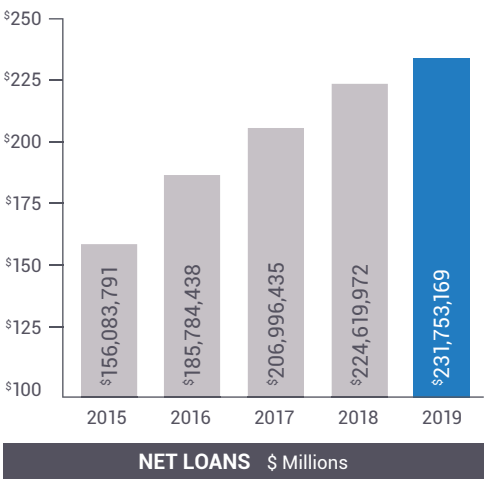
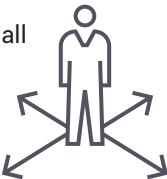


A focus on holistic financial health

You know it's important, but...you're busy, it's not exactly fun, and it's not always easy. Let us help.

Prospera is an integrated network of financial professionals who are trained to offer guidance in all aspects of financial services, such as financial planning, budgeting, banking, loans, investments, retirement planning and more.

We love teaching our members how to focus on what's important to them now, anticipate what's coming soon, and plan what's down the road for a healthy financial future.



Prospera Investment Services is now Prosperity Partners

Prosperity Partners is our way of simplifying what can be a complex and confusing financial world.

Our integrated LPL Financial Adviser makes it easy for you to live life in full – without the hassle of lots of legwork – so that you can strive for more prosperity in every area of your life.

You don't have to be rich to take advantage of Prosperity Partners' investment services. Start small and we'll help you accelerate and grow your financial well being.



How we work for you:



Launch New Investors

Helping new investors get the right start with single or systematic investment product purchases, coupled with as-needed contact with your personal advisor.



Engage an Established Portfolio

A more active financial resource for upwardly mobile investors, our team will help build on your existing portfolio.



Support from a Partner

Settled and stable investors managing investments for income need a partner approach to help with all aspects of financial health.

Securities and advisory services are offered through LPL Financial, a registered investment advisor and broker/dealer (member FINRA/SIPC). Insurance products are offered through LPL or its licensed affiliates. Prospera Credit Union and Prosperity Partners **are not** registered as a broker/dealer or investment advisor. Registered representatives of LPL offer products and services using the name Prosperity Partners, and may also be employees of Prospera Credit Union. These products and services are being offered through LPL or its affiliates, which are separate entities from and not affiliates of Prospera Credit Union or Prosperity Partners. Securities and insurance offered through LPL or its affiliates are:

NOT INSURED BY NCUA or ANY OTHER GOVERNMENT AGENCY	NOT CREDIT UNION DEPOSITS or OBLIGATIONS	NOT CREDIT UNION GUARANTEED	MAY LOSE VALUE
--	--	-----------------------------	----------------

Meet the Prosperity Partners Team



Jeff D. Garrett, CRPC
VP of Investment Services



Huong T. Tran, CRPC
LPL Financial Advisor



Erin M. Bishop
Investment Services Assistant



**Appleton Branch
and Corporate Offices**
4830 N. Ballard Rd.
Appleton, WI 54913

Darboy Branch
N9660 County Rd. N
Appleton, WI 54915

Menasha Branch
849 Warsaw St.
Menasha, WI 54952

Neenah Branch
934 S. Green Bay Rd.
Neenah, WI 54956

Oshkosh Branch
90 Wisconsin St.
Oshkosh, WI 54901

920-882-4800
MyProspera.com

Mission statement:
To help people prosper
financially to enhance
their quality of life.

